

Ferrite Core

GSRH CORE

Features (特長)

- Low cost , High current (低成本及高電流)
- Lowest EMI (防干擾對策)

Applications (用途)

- The RH type bead cores are mainly produced for the cable wire assemblers and MATV CATV makers (RH 形式的鐵粉芯磁珠產品主要應用於電纜線組裝配和 MATV CATV 製造)
- Power supply applications (電源供應器)



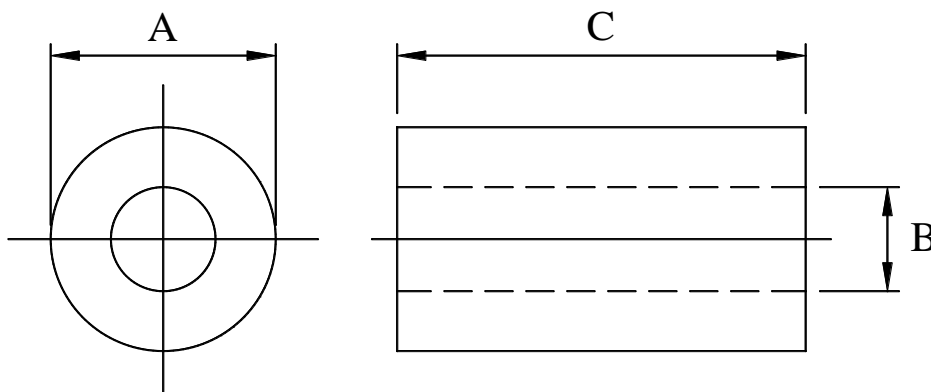
Product Identification (產品識別)

K5A RH 15.7 x 7.3 x 28.5 (Ex. K5A RH15.7x7.3x28.5 / K5A RH17.5x10.7x28.5)

1 2 3 4 5

1. Material (材質)
2. Form (型式) (RH or T)
3. Core A Dimension (鐵芯 A 尺寸)
4. Core B Dimension (鐵芯 B 尺寸)
5. Core C Dimension (鐵芯 C 尺寸)

Configurations & Dimensions (結構圖及規格尺寸)



Unit In mm

Type (型式)	A	B	C
K5A RH15.7x7.3x28.5	±0.5 15.7	±0.5 7.3	±0.5 28.5
K5A RH17.5x10.7x28.5	±0.5 17.5	±0.5 10.7	±0.5 28.5

♣ Design as Customer's Requested Specifications. (可依客戶特殊需求設計)